



Thermal Imaging Camera

Industry temperature measurement

T6-P

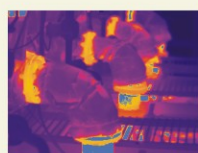
High resolution, portable

Rotatable LCD



www.dali-tech.com

T6-P Series Portable Thermal Imaging Camera



Color Warning



Voice Alarm

40 seconds of digital voice per image stored with image



LCD 90 degree rotatable



Laser Pointer

Manual focus

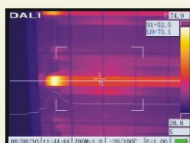


Power connector

USB port

SD card

Audio/Video Output



Line measurement

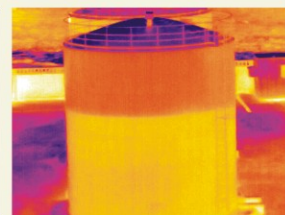
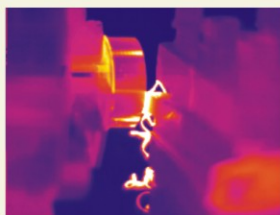


Area measurement



Optional Lenses

With advanced high resolution FPA detector and powerful integrated digital circuits as well as DSP image processing system, T6 series handheld thermal imaging camera stably performs high quality image, accurate temperature results. It is developed for variety requirements of instant infrared troubleshooting in fields such as electric, electronic, firefighting and building detection.



Parameter

Item		T6-P
Detector characteristics	Detector type	Uncooled FPA microbolometer
	Array size/format	384×288
Image characteristics	Field of view/min focus distance	16°×12°/0.5m
	Spatial resolution (IFOV)	0.88mrad
	Thermal sensitivity	≤0.06°C@30°C
	Frame rate	50/60Hz
	Focus	Manual
	Electronic zoom	2X
Image display	Spectral range	8-14μm
	LCD	Built-in high-resolution color 2.8" LCD
Measurement	Temperature ranges	-20°C- +350°C, optional up to +600°C
	Accuracy	± 2 °C or ± 2% of reading, Whichever is greater
	Measurement correction	Automatic/manual
	Measurement mode	Up to 4 movable spots. Up to 3 movable areas (maximum, minimum and average temperatures). Line profile. Isotherm. Temperature difference. Alarm(voice, color)
	Color palette	11
	Image adjustment	Auto/manual gain and brightness
	Setup functions	Date/time, temperature unit, language
	Emissivity correction	Variable from 0.01 to 1.0
	Ambient temperature correction	Automatic corrections according to user input
	Atmospheric transmission correction	Automatic correction according to user input object distance, relative humidity, ambient temperature
Image storage	Storage card	Built-in flash memory, SD card (1G), Up to 4000 images
	Storage mode	Automatic/manual single image saving
	File format-thermal	JPEG, 14 bit thermal image with measurement data
	Voice annotation	Input via built-in microphone Up to 40 seconds of digital voice per image stored with image
Laser pointer	Laser pointer	Class 2, 1mw/635nm(red)
Power supply	Battery type	Li-Ion, rechargeable
	Battery operating time	3 hours continuous operation
	Charging system	Intelligent charger or power supply adaptor(optional) online charge
	Power saving	YES
Environment	External power	10-15V DC
	Operating temperature	-15°C- +50°C
	Humidity	≤90%non-condensing
Physical characteristics	Encapsulation	IP54
	Weight	0.91Kg
Interface	Dimensions	303mm×123mm×85mm
	External DC input	Yes
	Audio output	Yes
	Video output	PAL/NTSC
	SD card	Yes
	USB	Image, measurement data and voice transfer to PC

▲ The information contained in this document is subject to change without notice