



# Thermal Imaging Camera

Industry temperature measurement

## TE Series

160×120 Uncool FPA detector

Low cost, small size

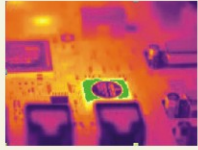
50Hz realtime measurement



[www.dali-tech.com](http://www.dali-tech.com)



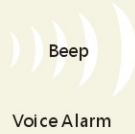
# TE series Portable Thermal Imaging Camera



Color Warning

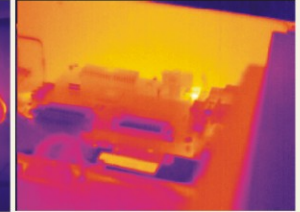


40 seconds of digital voice per image stored with image



Voice Alarm

TE series is a special low cost real-time IR camera in 160X120 resolution. It combines the traits of economical practical and portable. The camera symbolizes easy-to-use, standard and professional, developing for those applications that need instant infrared troubleshooting in power plant, petrochemicals, scientific research, fire fighting, and building inspection, metallurgy, etc. .

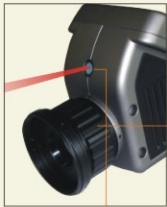


## Parameter

	Item	TE	TE-P
Detector characteristics	Detector type	Uncooled FPA microbolometer	
	Array size/format	160×120	
Image characteristics	Field of view/min focus distance	18°×13°/0.3m	
	Spatial resolution (IFOV)	1.9mrad	
	Thermal sensitivity	≤0.1°C@30°C	
	Frame rate	60Hz	50/60Hz
	Focus	Manual	
	Electronic zoom	N/A	2X
	Spectral range	8-14μm	
Image display	LCD	Built-in high-resolution color 2.5" LCD	
Measurement	Temperature ranges	-20°C - +350°C	-20°C - +350°C, optional up to +600°C
	Accuracy	± 2 °C or ± 2% of reading, Whichever is greater	
	Measurement correction	Automatic/manual	
	Measurement mode	Movable spot, Movable area (maximum, minimum and average temperatures), Isotherm, Alarm (voice, color)	Up to 4 movable spots, Up to 3 movable areas (maximum, minimum and average temperatures), Line profile, Isotherm, Temperature difference, Alarm (voice, color)
	Color palette	3 palettes changeable	11 palettes changeable
	Image adjustment	Auto/manual gain and brightness	
	Setup functions	Date/time, temperature unit, language	
	Emissivity correction	Variable from 0.01 to 1.0	
	Ambient temperature correction	Automatic corrections according to user input	
	Atmospheric transmission correction	N/A	Automatic correction according to user input object distance, relative humidity, ambient temperature
Image storage	Storage memory	Built-in flash memory, Up to 1000 images	Built-in flash memory, Up to 2000 Images
	Storage mode	Manual single image saving	Automatic/manual single image saving
	File format-thermal	JPEG, 14 bit thermal image with measurement data	
	Voice annotation	N/A	Input via built-in microphone Up to 40 seconds of digital voice per image stored with image
Laser pointer	Laser pointer	Class 2, 1mw/635nm(red)	
Power supply	Battery type	Li-Ion, rechargeable	
	Battery operating time	3 hours continuous operation	
	Charging system	Intelligent charger or power supply adaptor(optional) online charge	
	Power saving	YES	
	External power	N/A	10-15V DC
Environment	Operating temperature	-15°C - +50°C	
	Humidity	≤90% non-condensing	
	Encapsulation	IP54	
Physical characteristics	Weight	0.6Kg	
	Dimensions	250mm×100mm×72mm	
Interface	External DC input	N/A	Yes
	Audio output	N/A	Yes
	Video output	N/A	PAL/NTSC
	USB	Image, measurement data transfer to PC	Image, measurement Audio data transfer to PC

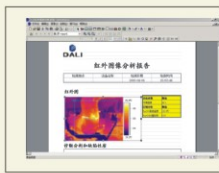


Low power consumption, 3 hours continuous operation

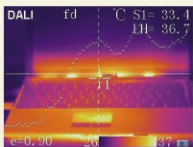


Laser Pointer

Manual Lens



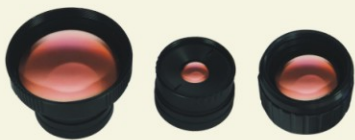
Free analysis software



Line measurement



Area measurement



Optional Lenses

▲ The information contained in this document is subject to change without notice