

Parameter		
ITEMS	LT3	LT7
Detector characteristics	Detector type	Un-cooled FPA micro-bolometer
	Array size/format	160x120 384x288
Image characteristics	Field of view/min focus distance	25°x19°/0.1m
	Spatial resolution ( IFOV )	2.73mrad 1.37mrad
	Thermal sensitivity	≤0.08℃@30℃ ≤0.06℃@30℃
	Frame frequency	50/60Hz
	Focus	Manual
	Zoom	X2
	Spectral range	8-14um
Image display	Built-in CCD camera	1.3 million pixels, COMS camera modules
	LCD display	2.7" TFT LCD, 320 x 240
Measurement	Temperature ranges	-20℃- +350℃ -20℃- +600℃
	Accuracy	±2℃ or ±2% of reading, Whichever is greater
	Measurement correction	Automatic / manual
	Measurement mode	Up to 4 movable spots. Up to 3 movable areas(maximum, minimum and average temperatures). Up to 2 movable lines. Line profile. Isotherms. Temperature difference. Alarm(voice, color)
	Image control	Color palette 11palettes changeable Image adjustment Auto/manual gain and brightness
	Setup functions	Date/time, temperature unit, language
	Emissivity correction	Variable from 0.01 to 1.0
	Background temperature correction	Automatic corrections according to user input
	Atmospheric transmission correction	Automatic correction according to user input object distance, humidity and temperature
	Storage card	2G SD card, max 16G
Image storage	Storage mode	Manual/Auto single file saving, IR and Visual image link saving
	File format	Thermal: JPEG with original thermal measurement data included Visual: JPEG
	Voice annotation	A built-in microphone up to 60 seconds of digital voice clip with each cared thermal imaging
Laser pointer	Laser locator	Class 2, 1mw/635nm(red), IEC 60 285
	Battery type	Li-Ion, rechargeable
Power source	Battery operating time	3 hours continuous operation
	Battery charging mode	Intelligent charger or power adaptor 12V(optional) to random charge
	Power saving	Auto dormancy and auto-shut down
	External power	10-15V DC
Environment	Operating temperature	-15℃-- +50℃
	Humidity	≤90% non-condensing
	Encapsulation	IP54
	Drop resistant	2m
Physical characteristics	Weight	1kg
	Dimension	105×245×230mm
	Memory slot	Micro SD card slot
	External DC input	YES
Interface	Video output	YES
	USB	Image, measurement data transfer

The information contained in this document is subject to change without notice

#### Analysis Software- Free of Charge

The images shot by LT3&LT7 could be downloaded fastly, and imported to the analysis software, to create WORD-FORM report for all the graphic data analysis.



#### Application in Electrical & Mechanical Industry

- Security Detection
- Loose Interface Detection
- Component Defective
- Insulation Failure
- HVAC Defective
- Repair Verification

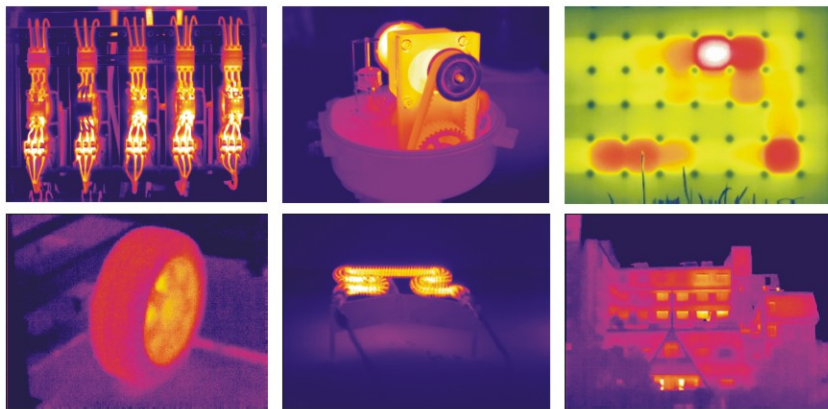


#### Application in Building Industry

- Fastly Scan Exterior Wall of the Buildings
- Make Accurate Preventive Maintenance Inside of the Room by Finding the Exact Location of the Water Leakage and Heat Leakage.



Analysis of Temperature Distribution of High and Low, Temperature Uniformity, Temperature Change in Other Industries Like Architecture, Electronics, and Technologies & Research, Could Call DALI Hotline for More Information.



#### ZHEJIANG DALI TECHNOLOGY CO.,LTD

Add:639 Binkang Road, Hangzhou, P.R.CHINA 310053

Tel: +86 571 86695603 Fax: +86 571 8669 5600

Web: www.dali-tech.com E-mail: sales@dali-tech.com

## HANDHELD COST-EFFECTIVE TOOL-LIKE THERMAL IMAGING CAMERA

### First Choice for Preventive Maintenance

## LT3/LT7





**DALI PROFESSIONAL**  
THERMAL IMAGING CAMERA MANUFACTURER

LT3/LT7 series

Superior image quality with 384x288 pixels



**DALI LT3/LT7**

# LT3/LT7 — First Choice for Preventive Maintenance

LT3 & LT7 are newly designed handheld tool-like infrared camera with 160×120 and 384 × 288 two different resolution, composed of infrared camera lens, infrared imaging detector module, visible light imaging module, laser module, LCD display, memory card, rechargeable battery, software and hardware processing system.

This infrared camera enjoy features of fast and accurate temperature measurment, user-friendly and rugged design, suit for various of preventive maintenance test.



2-meters Drop Resistant



1.3 million Pixels CCD Image



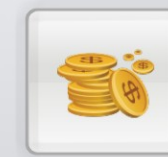
IP54



Various Temperature Measurement Functions



JPEG Storage with Voice Annotation

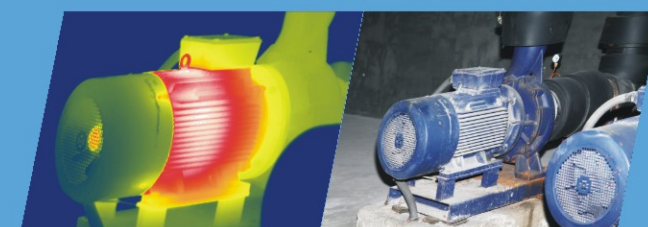
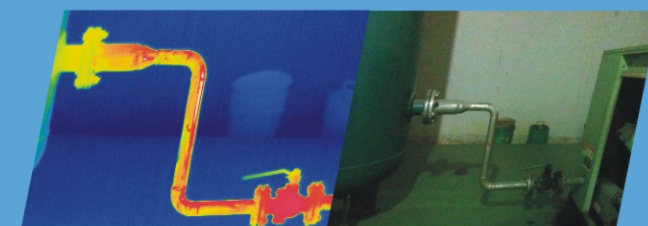


High Cost-effective

2-meters drop resistant



## Applications



**DALI**



Parameter		
ITEMS	LT3	LT7
Detector characteristics	Detector type	Un-cooled FPA micro-bolometer
	Array size/format	160x120 384x288
Image characteristics	Field of view/min focus distance	25°x19°/0.1m
	Spatial resolution ( IFOV )	2.73mrad 1.37mrad
	Thermal sensitivity	≤0.08℃@30℃ ≤0.06℃@30℃
	Frame frequency	50/60Hz
	Focus	Manual
	Zoom	X2
	Spectral range	8-14um
Image display	Built-in CCD camera	1.3 million pixels, COMS camera modules
	LCD display	2.7" TFT LCD, 320 x 240
	Temperature ranges	-20℃- +350℃ -20℃- +600℃
	Accuracy	±2℃ or ±2% of reading, Whichever is greater
	Measurement correction	Automatic / manual
Measurement	Measurement mode	Up to 4 movable spots. Up to 3 movable areas(maximum, minimum and average temperatures). Up to 2 movable lines. Line profile. Isotherms. Temperature difference. Alarm(voice, color)
	Image control	Color palette 11palettes changeable Image adjustment Auto/manual gain and brightness
	Setup functions	Date/time, temperature unit, language
	Emissivity correction	Variable from 0.01 to 1.0
	Background temperature correction	Automatic corrections according to user input
	Atmospheric transmission correction	Automatic correction according to user input object distance, humidity and temperature
	Storage card	2G SD card, max 16G
	Storage mode	Manual/Auto single file saving, IR and Visual image link saving
Image storage	File format	Thermal: JPEG with original thermal measurement data included Visual: JPEG
	Voice annotation	A built-in microphone up to 60 seconds of digital voice clip with each cared thermal imaging
Laser pointer	Laser locator	Class 2, 1mw/635nm(red), IEC 60 285
	Battery type	Li-Ion, rechargeable
Power source	Battery operating time	3 hours continuous operation
	Battery charging mode	Intelligent charger or power adaptor 12V(optional) to random charge
	Power saving	Auto dormancy and auto-shut down
Environment	External power	10-15V DC
	Operating temperature	-15℃-- +50℃
	Humidity	≤90% non-condensing
	Encapsulation	IP54
Physical characteristics	Drop resistant	2m
	Weight	1kg
	Dimension	105×245×230mm
Interface	Memory slot	Micro SD card slot
	External DC input	YES
	Video output	YES
	USB	Image, measurement data transfer

The information contained in this document is subject to change without notice

#### Analysis Software- Free of Charge

The images shot by LT3&LT7 could be downloaded fastly, and imported to the analysis software, to create WORD-FORM report for all the graphic data analysis.



#### Application in Electrical & Mechanical Industry

- Security Detection
- Loose Interface Detection
- Component Defective
- Insulation Failure
- HVAC Defective
- Repair Verification

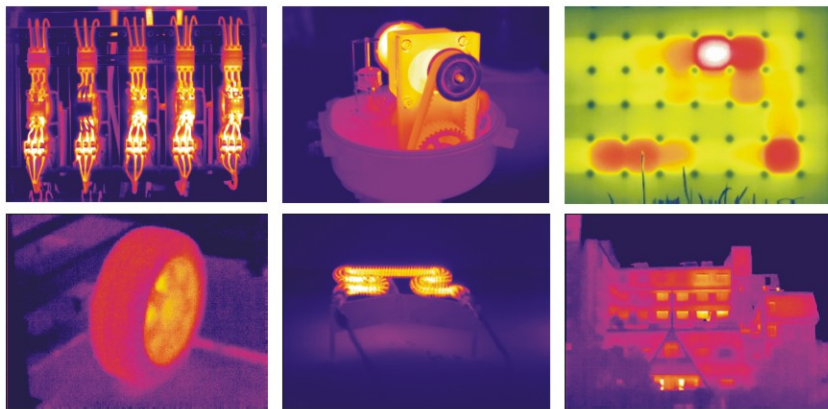


#### Application in Building Industry

- Fastly Scan Exterior Wall of the Buildings
- Make Accurate Preventive Maintenance Inside of the Room by Finding the Exact Location of the Water Leakage and Heat Leakage.



Analysis of Temperature Distribution of High and Low, Temperature Uniformity, Temperature Change in Other Industries Like Architecture, Electronics, and Technologies & Research, Could Call DALI Hotline for More Information.



#### ZHEJIANG DALI TECHNOLOGY CO.,LTD

Add:639 Binkang Road, Hangzhou, P.R.CHINA 310053

Tel: +86 571 86695603 Fax: +86 571 8669 5600

Web: www.dali-tech.com E-mail: sales@dali-tech.com

## HANDHELD COST-EFFECTIVE TOOL-LIKE THERMAL IMAGING CAMERA

— First Choice for Preventive Maintenance

LT3/LT7



www.dali-tech.com